

Arti in 230x280 size

TECHNICAL FEATURES

Size (outside dimensions)

- Width 2300 x depth 2800 x height 2480 mm

Exterior and terrace

- Exterior finish: thermally modified and brushed Nordic spruce, C26 profile 19x141 mm, finishing with UV protection
- Waterproof roofing material suitable for outside
- Modern design black rain gutter
- Terrace finishing and board materials: thermally modified wood, brown finishing with UV protection

Interior

- Inside wall and ceiling panels: horizontal Rombto profile 27x90 mm
- Interior includes benches, bench skirt, backrest, floor grids and optional heater guard
- Drainage in backside of sauna floor
- Wood type applies to wall panels, ceiling panels and interior sauna room details

Doors and windows

- Double-glazed tempered glass
- Quality pine frames, brown finishing RAL8014 with UV protection
- Windows: triple-glazed tempered selective glass
- Stainless steel/wood handles and black oxide lock

Lighting

- Terrace: outdoor spot LED lights (IP65) plus switch on terrace
- Inside sauna: high quality sauna LED strips behind backrest and under benches
- Lighting dimmable via remote

Electrical Equipment

- Auroom electrical heater
 - D - 'Dry' for traditional sauna
 - H - 'Humid' heater with vaporizer
- Auroom Impera i control unit or Huum Uku Wifi Glass control unit

Packing and handling

- Prefabricated (ready to use module)

On-site preparations by client

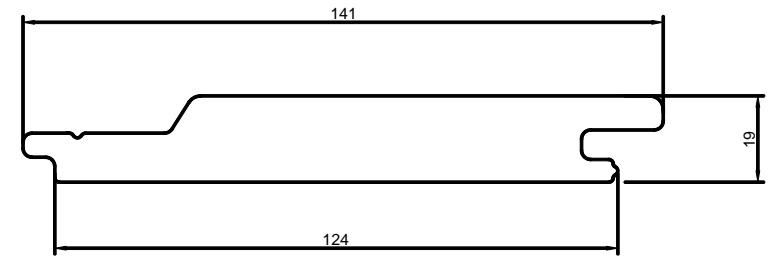
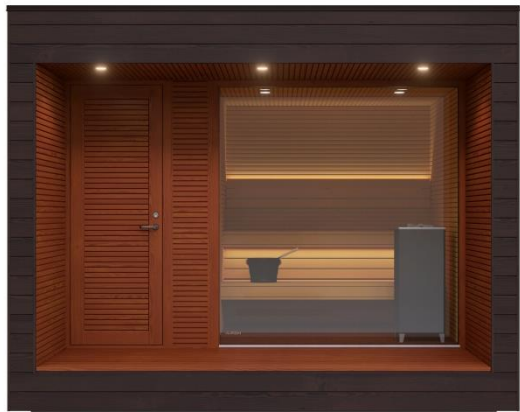
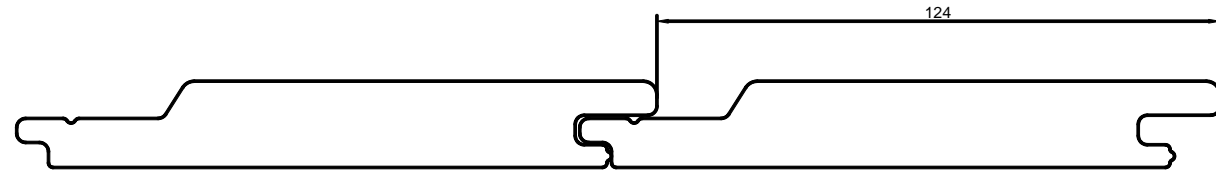
- Lifting options: crane or forklift
- Solid and level substructure, concrete slab preferred
- Final electrical connections to be done on-site



C26 19x141 Black

Natura/Arti

Thermory Spruce/Termokuusk



AURROOM
Our Saunas Your Wellness

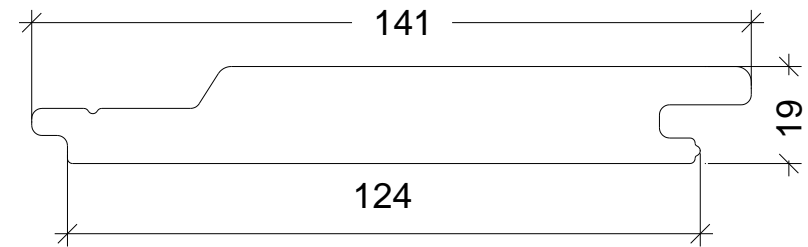


C26 19x141 Dark grey

Natura/Arti

Thermory Spruce/Termokuusk

AUROOM
Our Saunas Your Wellness



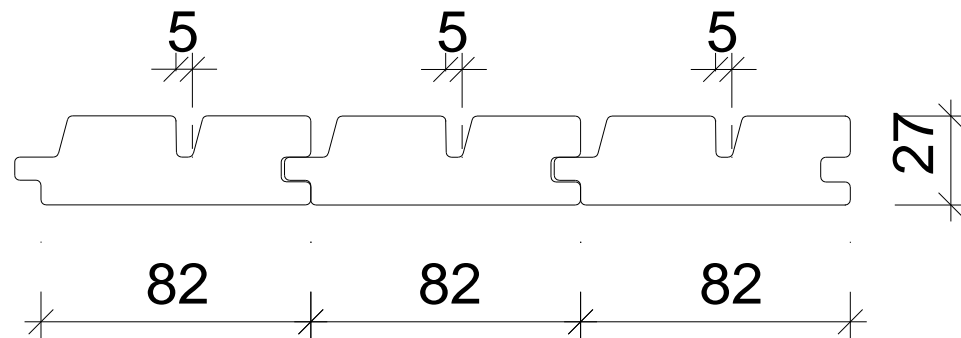
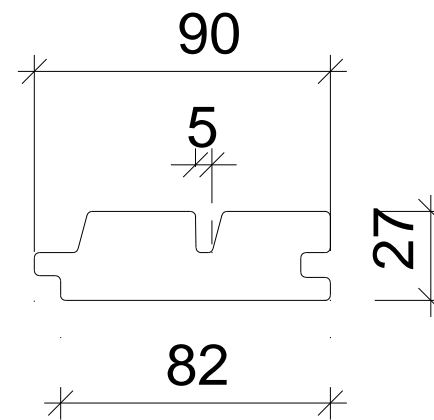
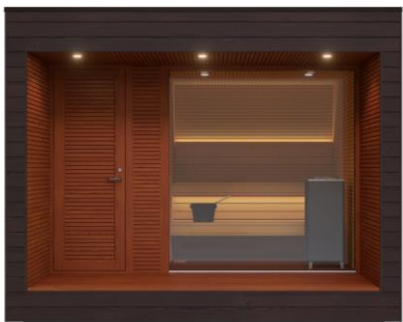
AUROOM
Our Saunas Your Wellness



ROMBTO 27x90

Natura/Arti

Aspen/haab



AURROOM

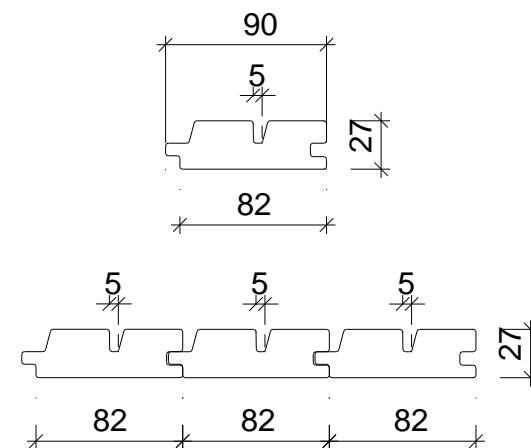
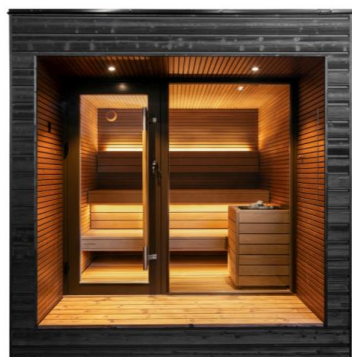
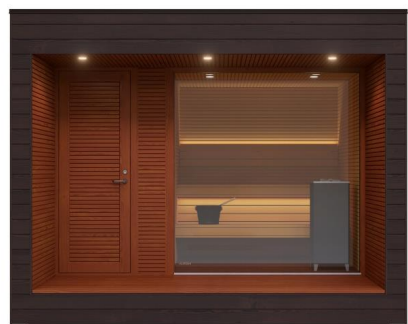
Our Saunas Your Wellness



ROMBTO 27x90

Natura/Arti

Alder/lepp



AURROOM

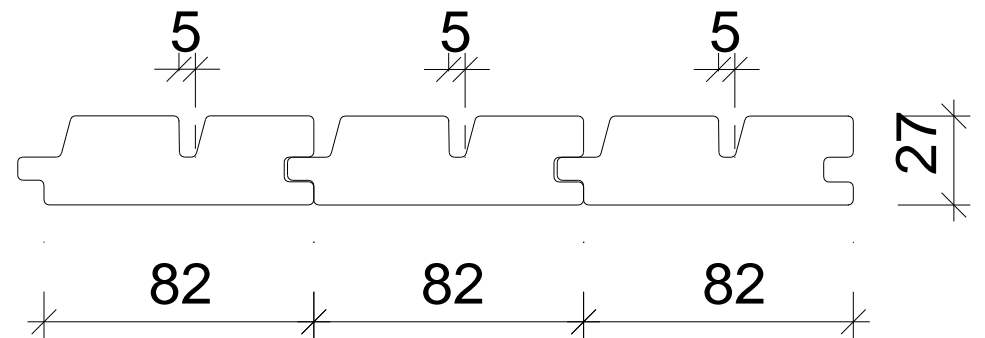
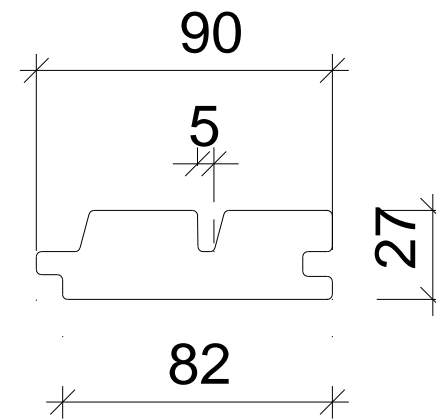
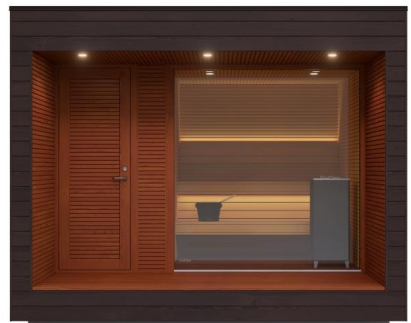
Our Saunas Your Wellness



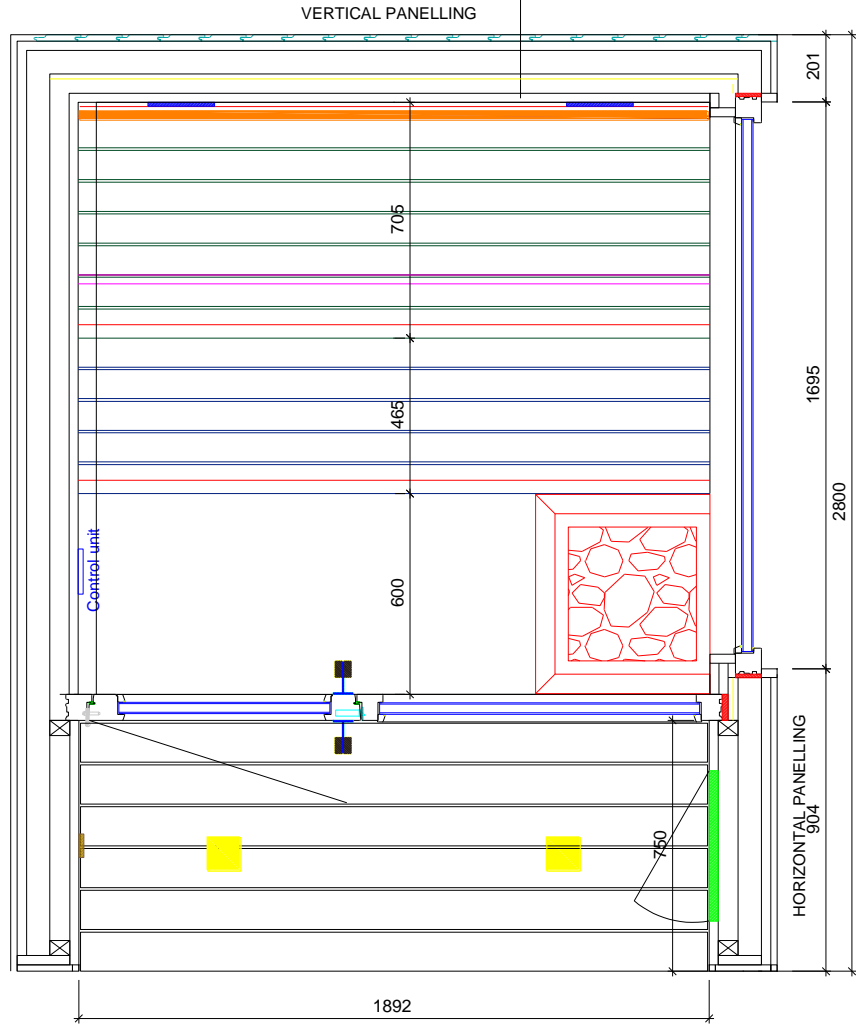
ROMBTO 27x90

Natura/Arti

Thermo Aspen/Termohaab



Top view



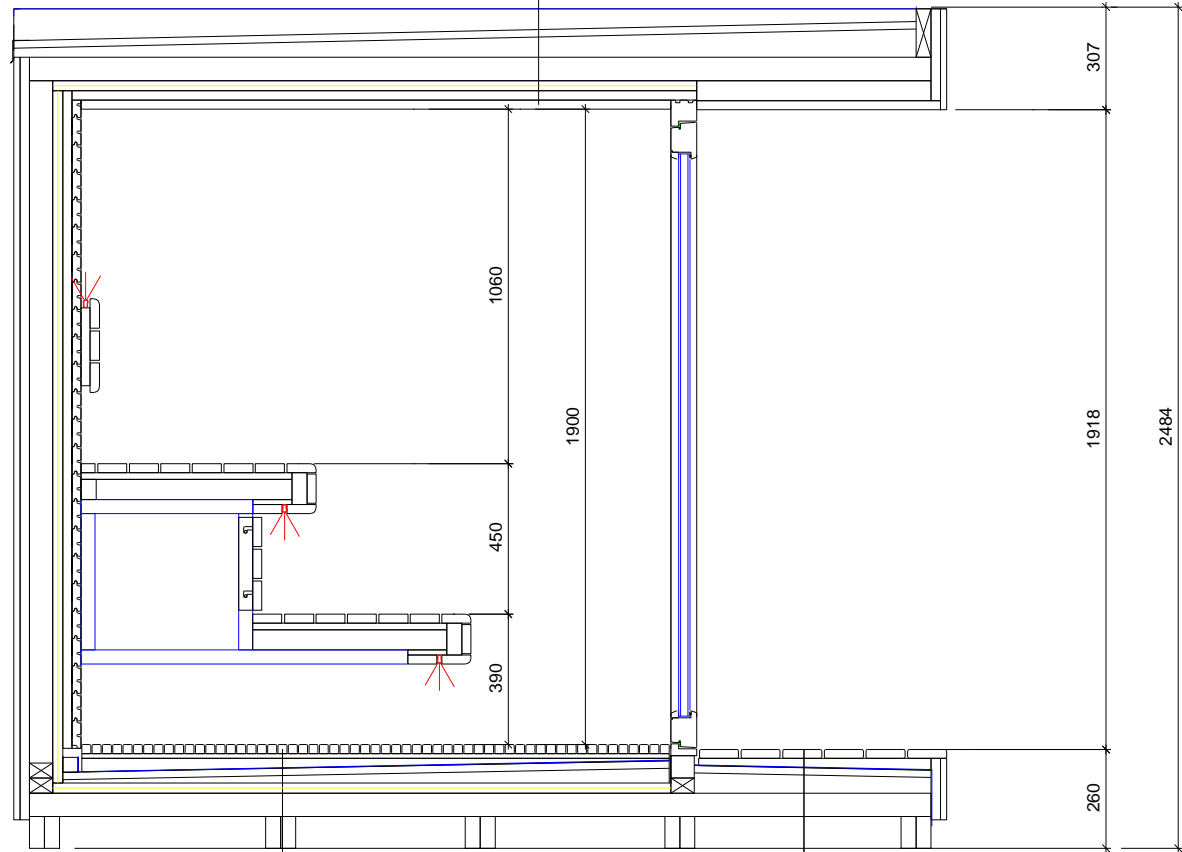
Wall section (Outside to inside):

1. Outside panelling 19 mm
2. 28 mm distance
3. 70 mm CLT
4. 30 mm kingspan board with foil
5. 28 mm distance
6. 27 mm inside panelling

Roof section (Outside to inside):

1. Waterproof layer
2. 22 mm OSB chipboard
3. Sloping beams
4. 70 mm CLT
5. 30 mm kingspan board with foil
6. 28 mm distance
7. 27 mm inside panelling

Side view



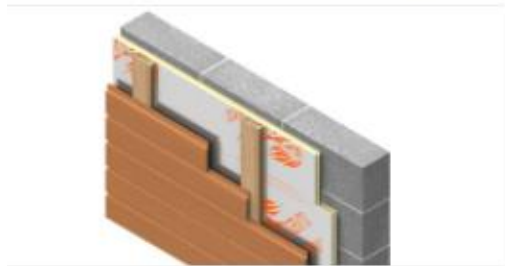
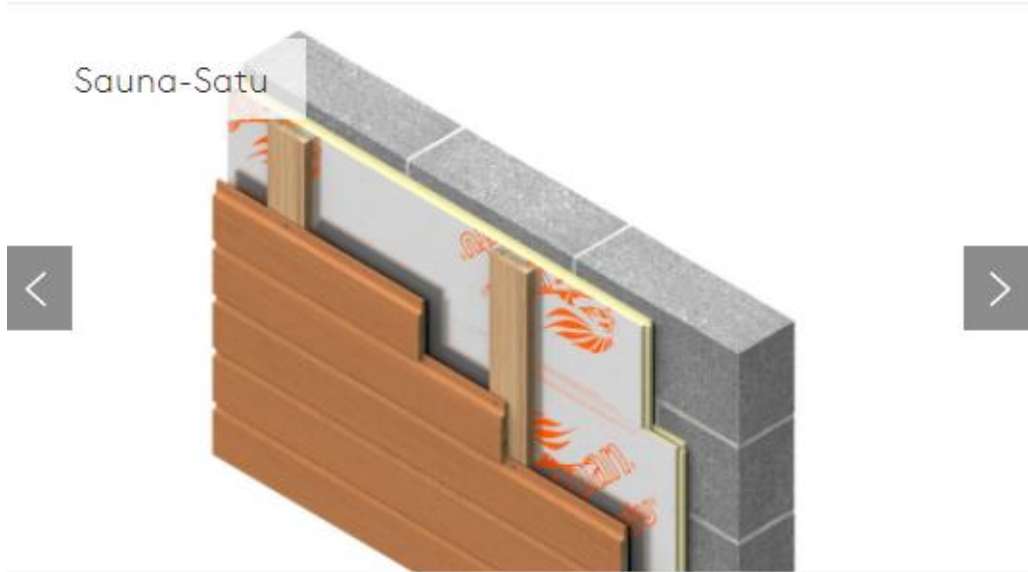
Floor section (Inside to outside):

1. Floor grids
2. Sloping beams
3. Waterproof layer
4. 22 mm OSB chipboard
5. Sloping beams
6. 30 mm kingspan board with foil
7. 70 mm CLT
8. 45x95 mm impregnated beams on the base

Floor section (Inside to outside):

1. Terrace decking
2. Sloping beams
3. Waterproof layer
4. 22 mm OSB chipboard
5. Sloping beams
6. 70 mm CLT
7. 45x95 mm impregnated beams on the base

OSB- Oriented Strand Board



- 1) Effective thermosetting insulation
- 2) Up to twice as effective insulation as conventional insulation materials
- 3) Vapor Proof
- 4) Does not contain harmful substances

Cross laminated timber (CLT)

- Versatile architectural use
 - High fire resistance
 - Good thermal insulation and soundproofing
 - Load capacity and stability
 - Light weight - cost on the foundation is less
-
- Cross laminated panels (CLT) are designed to withstand both cross direction and parallel tension. At the same time, they can receive compressive stress that occurs, for example, in case of wall elements. When comparing CLT to ordinary glued timber, the tensile strength indicators are also better. Why? This is because the outer lamellae of the panel are mounted in the direction of an acceptable force.

